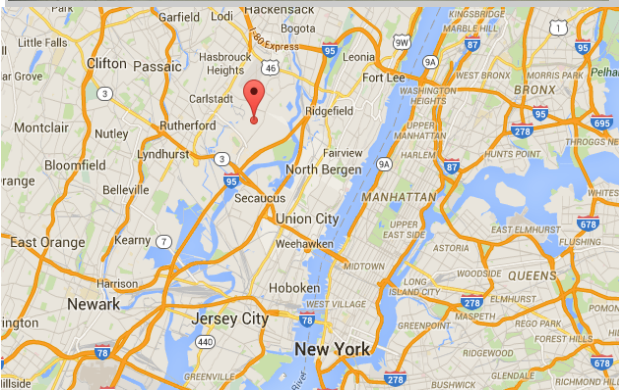


99 Kero Rd. Carlstadt, NJ



FOR SALE

\$4,800,000

43,500 SF on 2.2 Acres

- Approx. 4,000 SF office
- 16' Ceiling
- 4 Loading Docks-(2 Trailer height
- 2 UPS height)
- 1 Drive-in
- 25'x35' Column Spacing
- 25 Parking Spaces (additional parking in rear)
- New roof, offices, heating/AC, LED lighting, etc.
- Taxes \$1.47 psf
- Located less than 8 miles from Manhattan via Lincoln Tunnel
- Updated environmental done 6/2015 clean, no further action required by NJDEP

For more information:

1-800-732-4035

Shaya E. Grosinger

(917)359-5727

Shaya@gramercynj.com

Yoel Jacob

(718)598-7791

Yoel@gramercynj.com

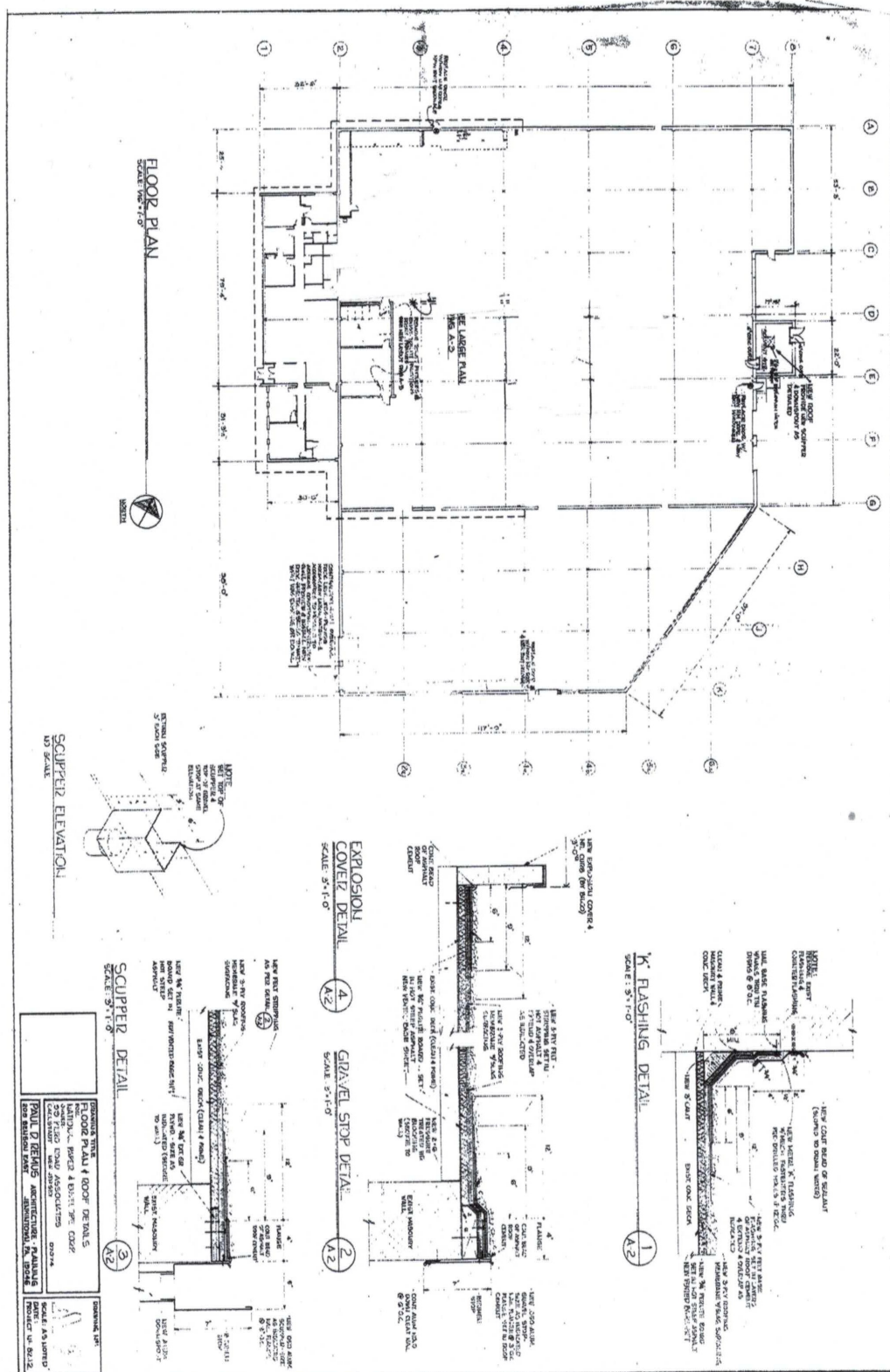
GRAMERCY REAL ESTATE SERVICES, LLC 25 COMMERCE DR. SUITE 370 CRANFORD, NJ 07016

The information contained herein has been obtained from sources considered to be reliable, but no guarantee of its accuracy is made by this company. In addition, no representation is made respecting zoning, condition of title, measurements, dimensions, or any matters of a legal or environmental nature. Such matters should be referred to legal counsel for determination. This correspondence is subject to errors, omissions, updates or withdrawal without prior notice.



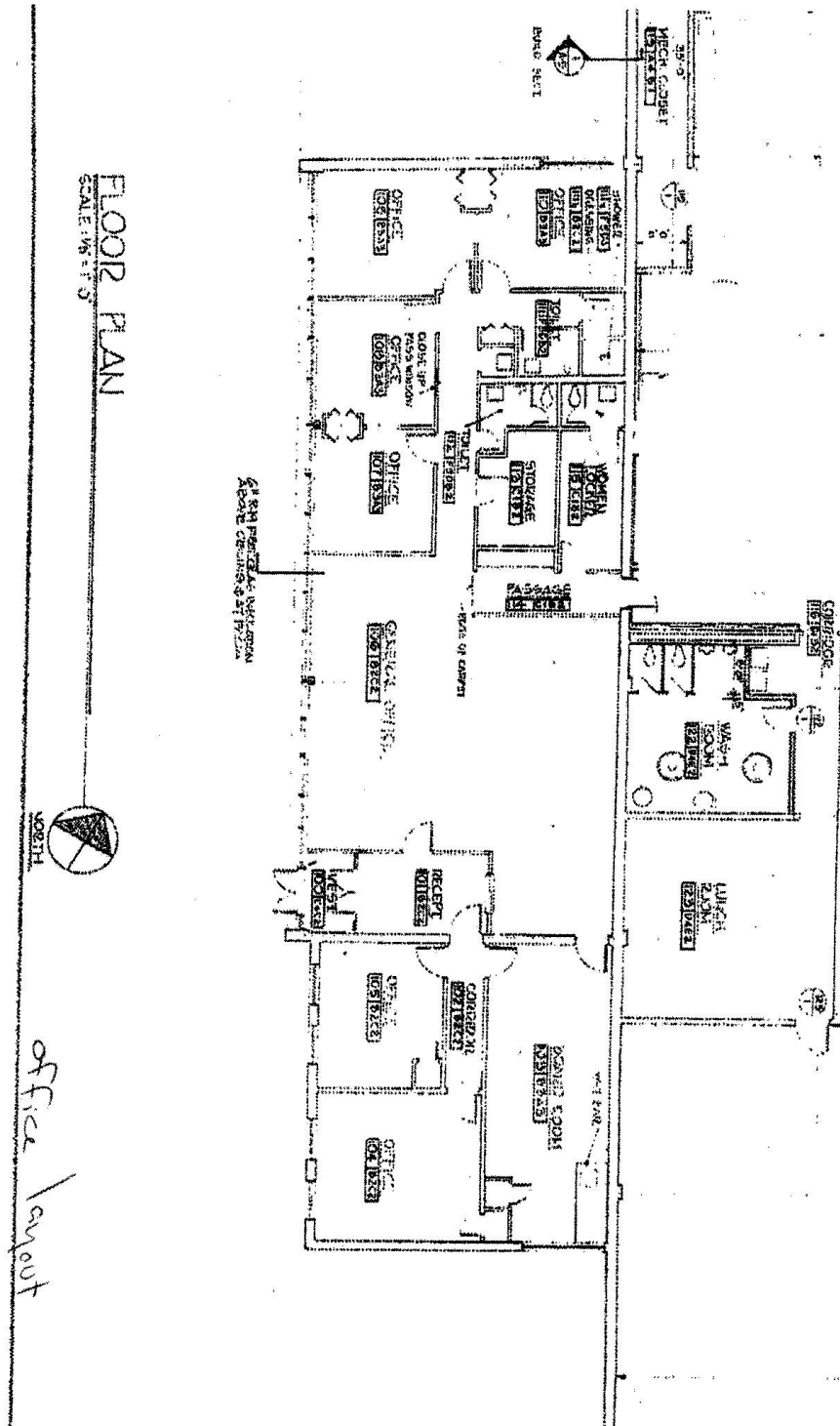
GRAMERCY REAL ESTATE SERVICES, LLC 25 COMMERCE DR. SUITE 370 CRANFORD, NJ 07016

The information contained herein has been obtained from sources considered to be reliable, but no guarantee of its accuracy is made by this company. In addition, no representation is made respecting zoning, condition of title, measurements, dimensions, or any matters of a legal or environmental nature. Such matters should be referred to legal counsel for determination. This correspondence is subject to errors, omissions, updates or withdrawal without prior notice.



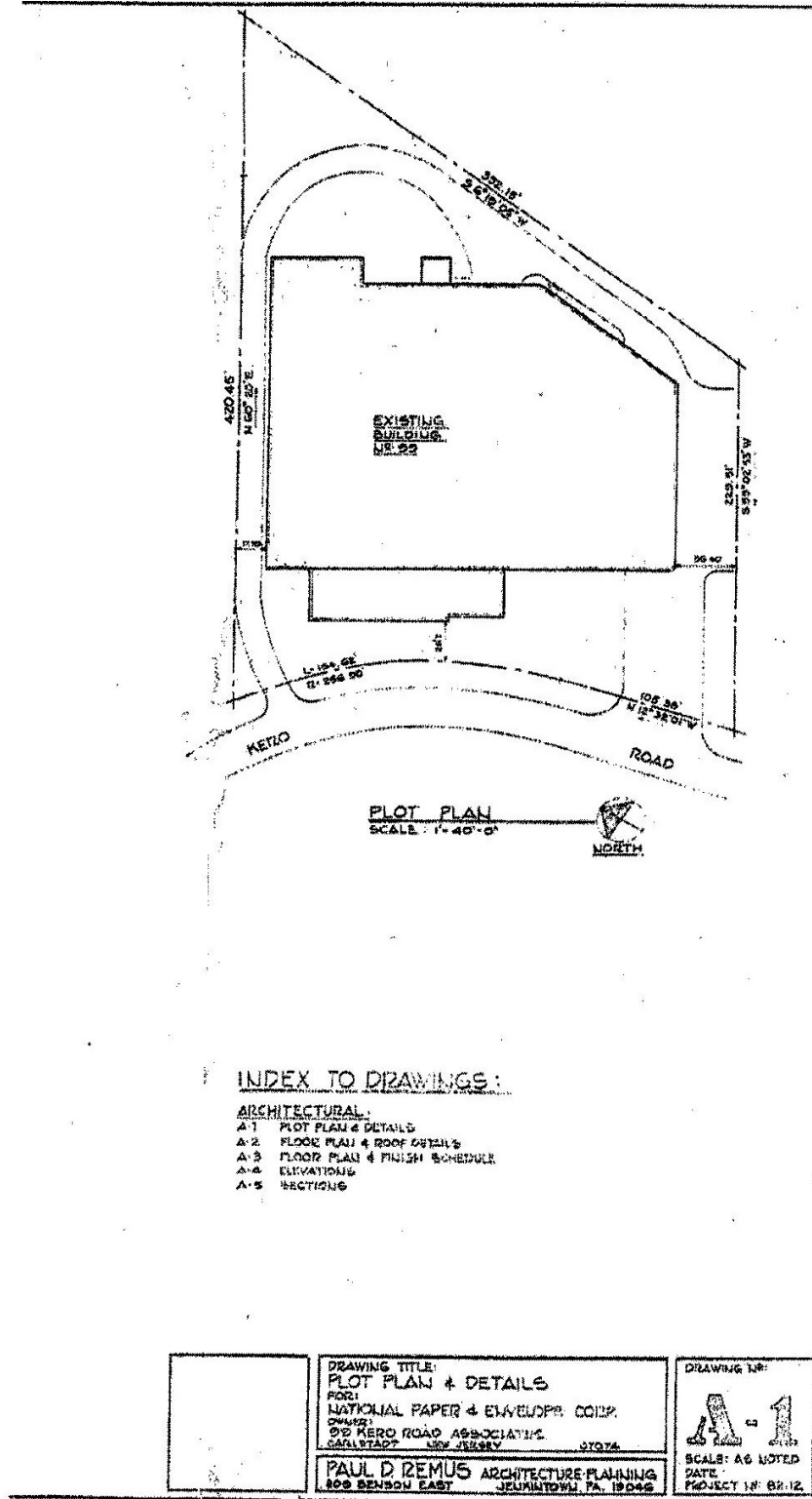
GRAMERCY REAL ESTATE SERVICES, LLC 25 COMMERCE DR. SUITE 370 CRANFORD, NJ 07016

The information contained herein has been obtained from sources considered to be reliable, but no guarantee of its accuracy is made by this company. In addition, no representation is made respecting zoning, condition of title, measurements, dimensions, or any matters of a legal or environmental nature. Such matters should be referred to legal counsel for determination. This correspondence is subject to errors, omissions, updates or withdrawal without prior notice.



GRAMERCY REAL ESTATE SERVICES, LLC 25 COMMERCE DR. SUITE 370 CRANFORD, NJ 07016

The information contained herein has been obtained from sources considered to be reliable, but no guarantee of its accuracy is made by this company. In addition, no representation is made respecting zoning, condition of title, measurements, dimensions, or any matters of a legal or environmental nature. Such matters should be referred to legal counsel for determination. This correspondence is subject to errors, omissions, updates or withdrawal without prior notice.



GRAMERCY REAL ESTATE SERVICES, LLC 25 COMMERCE DR. SUITE 370 CRANFORD, NJ 07016

The information contained herein has been obtained from sources considered to be reliable, but no guarantee of its accuracy is made by this company. In addition, no representation is made respecting zoning, condition of title, measurements, dimensions, or any matters of a legal or environmental nature. Such matters should be referred to legal counsel for determination. This correspondence is subject to errors, omissions, updates or withdrawal without prior notice.